

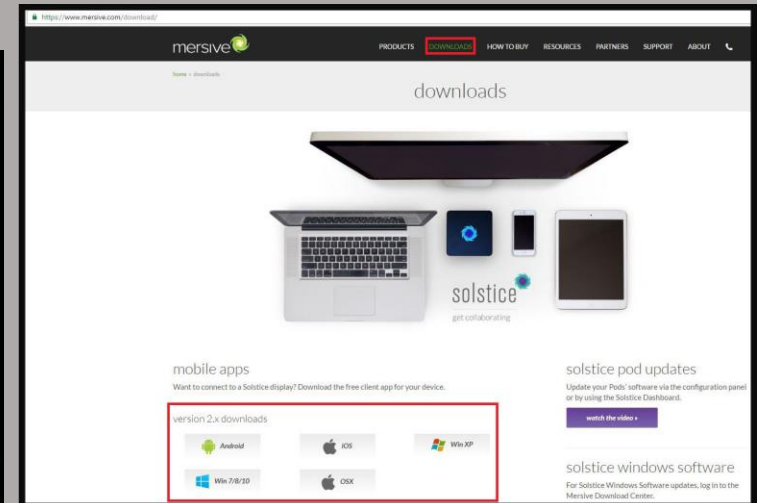
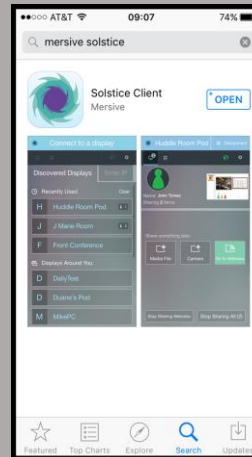
# 1. Get the Mersive Solstice App

## **Laptop**

1. Navigate to [www.mersive.com](http://www.mersive.com)
2. Select *Downloads* in the tool bar
3. Choose your operating system
4. Save and run the download

## **Mobile Device**

1. Go to your App Store
2. Search *Mersive Solstice*
3. Download the free App



# 2. Launch the Mersive Solstice App

## **On the display computer**

1. On the desktop, double-click the *Application Launcher* shortcut
2. Click on the Solstice tile from the *Application Launcher*

## **On your laptop or mobile device**

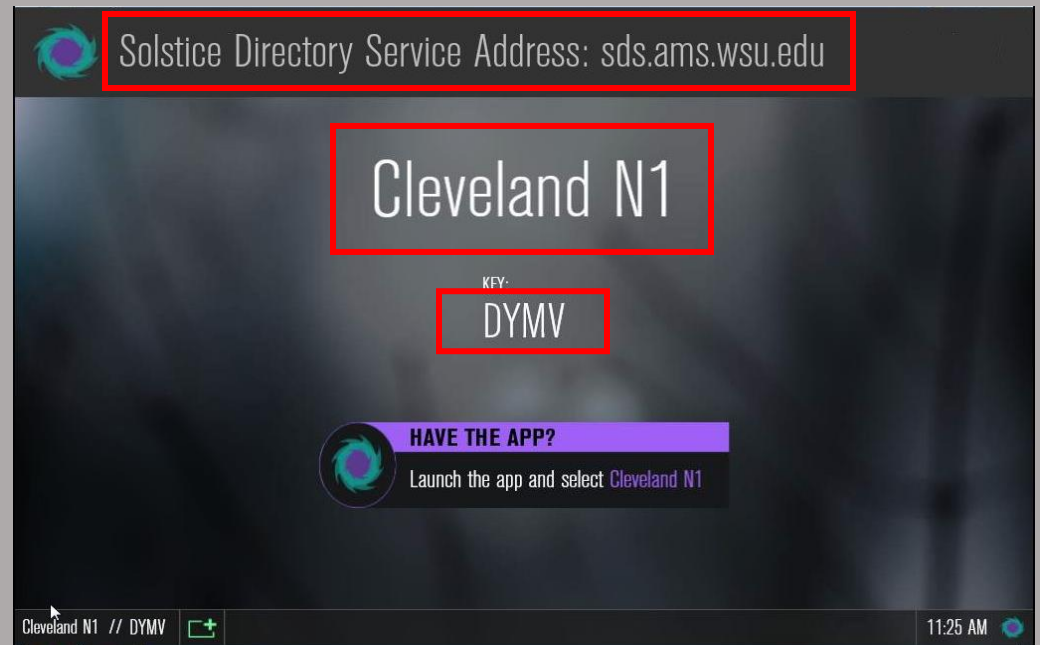
1. Open the Solstice Application



# 3. Share Your Screen

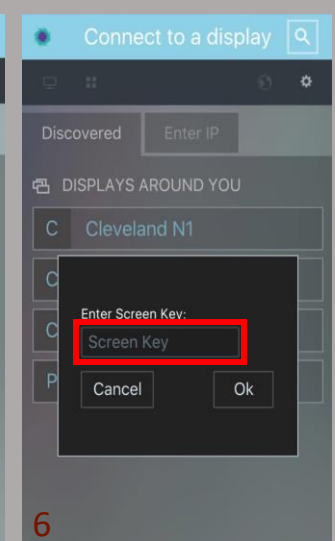
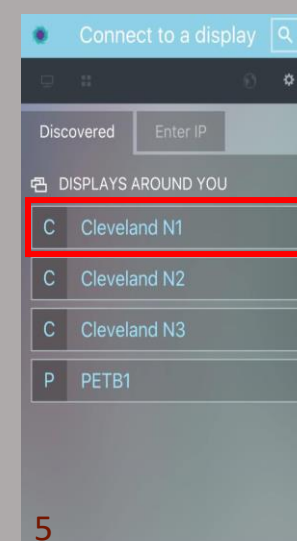
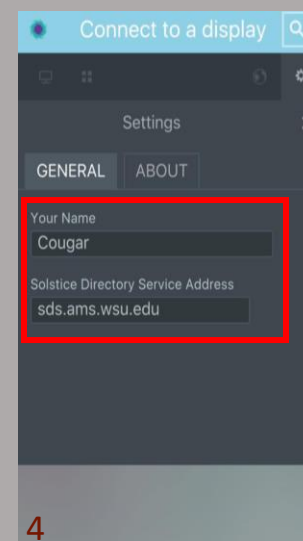
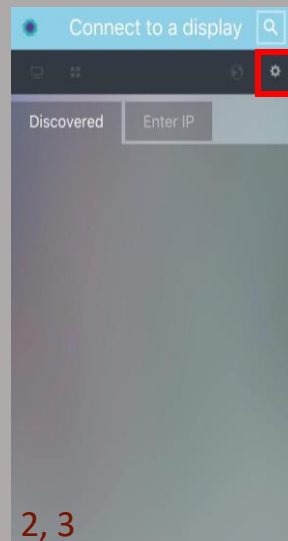
## On the display computer

1. Once Solstice is launched, you will see this screen displaying the Solstice Directory Service Address, a display name and a key



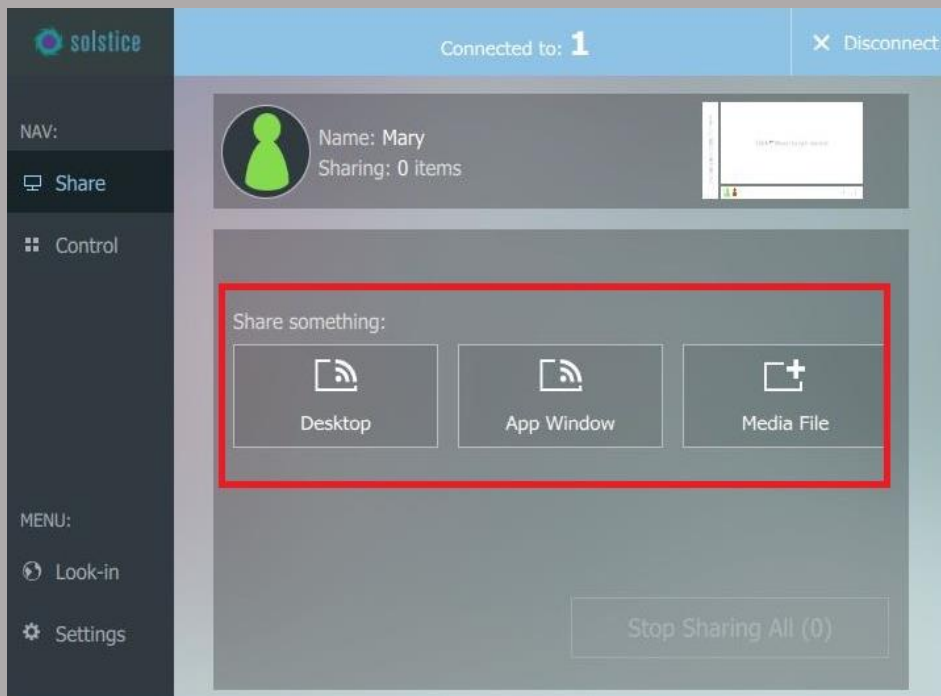
## On your laptop or mobile device

1. Connect to *WSU Wireless* network
2. Once Solstice is launched, you will see this screen on your device
3. Click on settings
4. Enter your name and the Solstice Directory Service Address: sds.ams.wsu.edu
5. Click on the name that is matching with a name on the screen
6. When prompted, enter the Key located on the display screen, click *Ok*



## Share your laptop

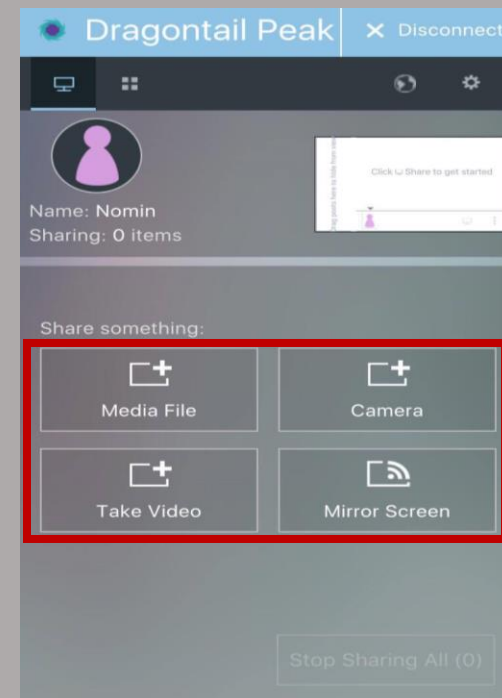
1. You will have the option to share your entire desktop, a single application or a media file



## Share your mobile device

1. You will have the option to share a media file or use your camera to take a photo or video

**Please note:** Screen mirroring is *not* available for iPhone and iPad



## 4. Exit Solstice

### On the display computer

1. Click on the Solstice icon located in the bottom right corner
2. Click *System*
3. Click *Exit Solstice*

